

ADOPT A STATION

Presentation to Transform Scotland on 3 December 2010

John Yellowlees, ScotRail External Relations Manager



In an Ideal World

- stations are at the heart of their communities
- station buildings are occupied by activities that enhance the rail journey
- station gardens are awash with flowers tended by railway staff
- stations are at ease with their heritage

Marjorie at Ladybank



Aberdour : the iconic station for gardening



Nairn florist



In the Real World

- stations should be clean and functional, but may not be inspiring
- buildings that survive because they are listed may have no railway use
- it may not be practicable to sell off redundant buildings for non-railway use
- green fingers may not be the top attribute of railway staff

Kirknewton



Carlisle park and ride



Some enduring successes

- West Highland bunkhouses and restaurants, Glenfinnan diner and museum, Morar community newspaper
- the Friends at Kyle
- Aviemore - change for Strathspey
- the florist at Nairn
- Dingwall café and bar
- Hitrans office at Lairg
- Forth Bridge centenary mural at N Queensferry

Glenfinnan Diner



First ScotRail

- Adopt A Station proforma on surplus accommodation launched at Rannoch
- station gardening instructions
- related aspirations - security, information
- SQUIRE – fined £780k last year!
- Railway Heritage Trust

Dr David Bellamy launching the ...



Rannoch heritage centre



The Story So Far – surplus accommodation : community use or business start-up



Note : several have either spent money on the premises for little or no rent or are on a commercial basis at a rent that they can afford.

- Pitlochry Station Bookshop
- Dunblane - The Ironing Station
- Renton – Strathleven Artizans
- Lanark - Clyde Model Railway Club
- Kilmarnock - East Ayrshire Toy Library
- Girvan – SAYLSA’s shop
- Upper Tyndrum – ScotGold
- The Royal Society of Edinburgh at Arbroath
- Maxwell Park and Arisaig community meeting rooms
- Ladybank – artist Kirsty Lorenz’s studio
- The Friends of Wemyss Bay Station : bookshop and gallery

Dunblane : The Ironing Station



Renton : an unprepossessing exterior housing



.... Strathleven Artizans





Lanark : Clyde Model Railway Club



rse@arbroath



Maxwell Park : Pollokshields Heritage meeting room



Arisaig – HITRANS meeting room :

photo by Tony Miles



Kirsty Lorenz



Friends of Wemyss Bay Station





The Story So Far - Gardening

- 109 stations adopted by gardeners
- Pitlochry, Uddingston, North Berwick and Forres have been winners at Beautiful Scotland or Britain in Bloom with the help of their stations
- Helensburgh and Gareloch Horticultural Society at both Helensburgh stations, East Ayrshire Gardening Club at Kilmarnock
- basket trees with Lanark in Bloom, Uddingston Pride, Lockerbie in Bloom
- Deeside Timberframes funded Stonehaven working with Horizons Group
- Pollokshields East has The Hidden Gardens
- schools at North Queensferry, Dalmeny, Queens Park
- Langside College horticultural students have planted Rutherglen
- Neilston Development Trust indoors as well as planters and bulb-planting
- The Friends of Wemyss Bay Station tiered planters
- individuals at Whitecraigs, Johnstone, Ardrossan South Beach, Crianlarich
- Geoffrey Evison has personally initiated gardening at a dozen stations
- Largs in Bloom donated a planter
- Community Champion award for Hollybrook Secondary at Queens Park
- Rotary Clubs at Falkirk, Larbert, Alloa, Newcraighall, Dalgety Bay, Rosyth, Kirkcaldy

Ian Wilson at Uddingston



Uddingston Pride



North Berwick in Bloom



Cupar in Bloom



Lanark in Bloom



Stonehaven : Deeside Timberframes



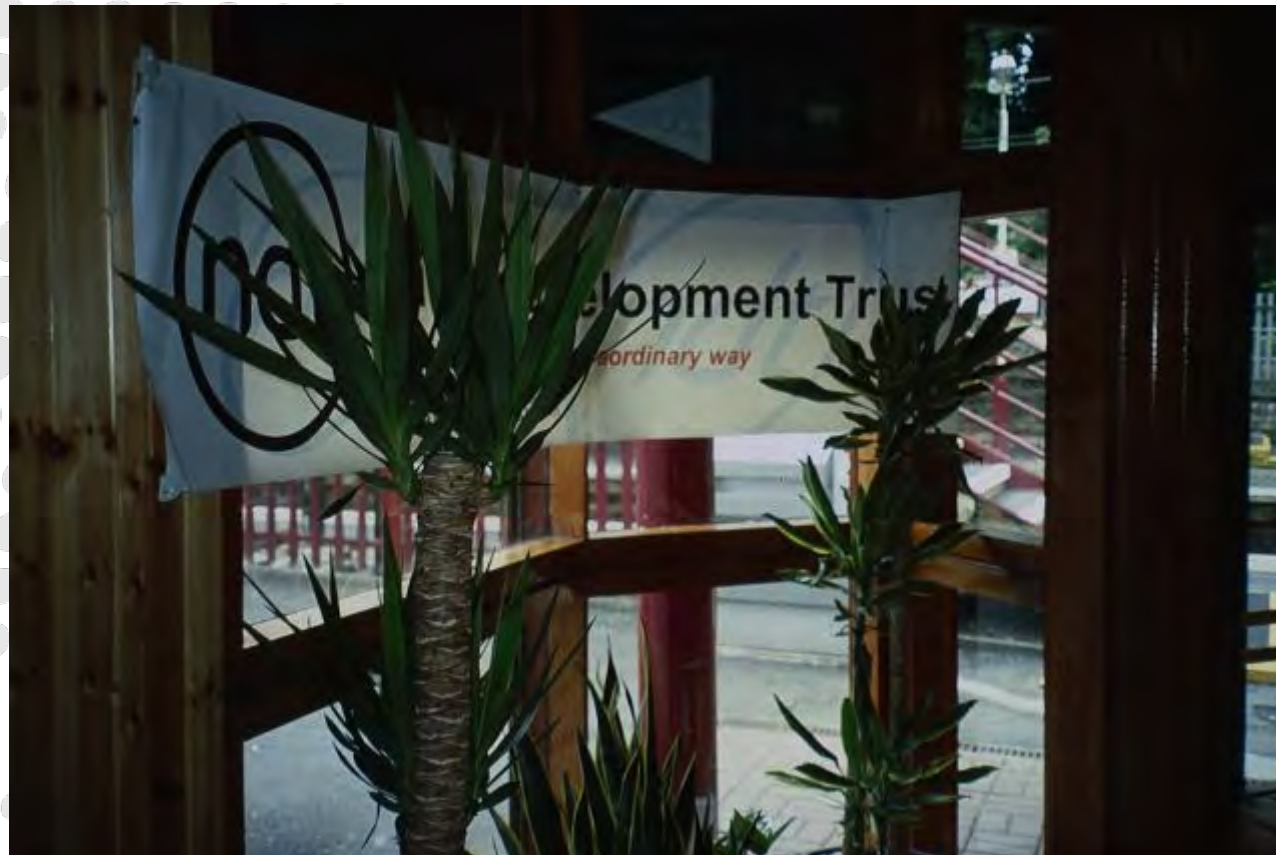
The Hidden Gardens at Pollokshields East



Langside College at Rutherglen



Neilston indoors as well as out



Falkirk Grahamston



Helensburgh & Gareloch Horticultural Society



Friends of Wemyss Bay Station tiered planters



Peter McKinley at Whitecraigs



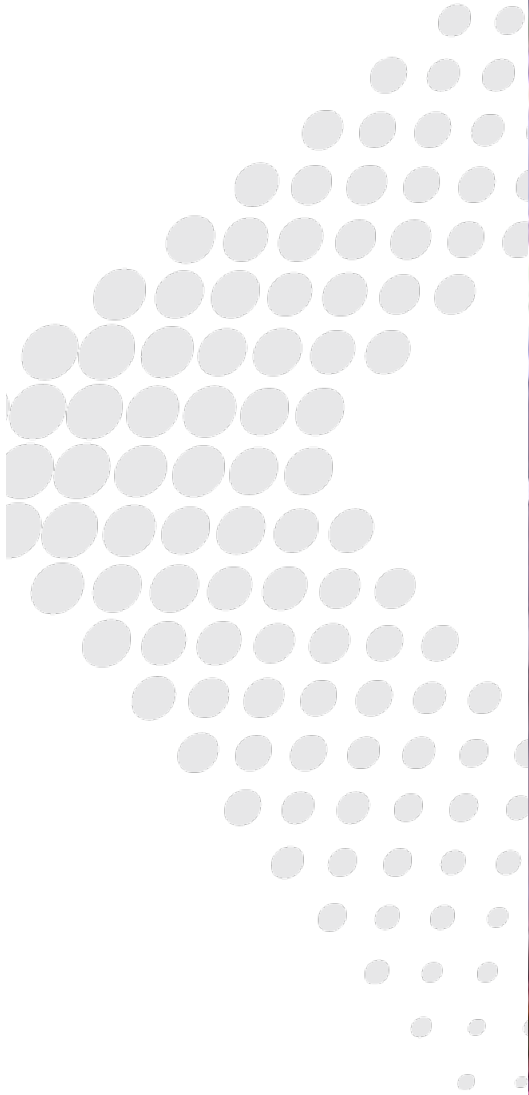
Whitecraigs flowerbed



Whitecraigs turning circle



Johnstone :



Burnside Community Council grew into Burnside in Bloom



Crianlarich Station Tearoom



Geoffrey Evison at Upper Tyndrum



Forres in Bloom



Pollokshields Heritage at Maxwell Park



Gretna Green



New benches for Bridge of Allan's 25th anniversary



The Story So Far – works of art

- Pitlochry wrought-iron porter
- Perth High School train painting
- Linlithgow banners and mosaics
- Edinburgh Park stained glass
- murals at Invergordon and Prestonpans
- Barrhead High School posters
- the Declaration of Arbroath
- Aberdeen Gaelic art
- Stewarton – the Bonnet Toun
- Bishopbriggs – Thomas Muir poster

Perth trains down the ages



Linlithgow banners



Linlithgow mural and mosaic



Edinburgh Park : Yoshiro Oyama's window



Seaforth Highlanders by Tracey Shough



Prestonpans by Adele Conn



Barrhead underpass and stair



Arbroath Abbey Timethemes



Aberdeen Gaelic art



Stewarton the Bonnet Toun



Bishopbriggs : home of Thomas Muir



Lessons learned :

- Adopt A Station appeals to a wide range of communities, helping showcase them to the passing traveller, and can be part of a wider neighbourhood improvement movement
- safety requirements when sensibly interpreted need not be unduly onerous
- the benefits far outweigh the modest costs of start-up and even smaller ongoing maintenance
- CCTV protects against vandalism, but a greater threat is said to be plant thieves
- gardening need only be low-maintenance in order to achieve a worthwhile impact

Keys to success

- safety first
- inspire us!
- work in partnership
- remember that rail is heavily regulated
- accept our timescales
- mutual self-interest
- Stations Community Regeneration Fund



Still to Come

- the four first-round recipients of SCRF –
Dumbarton Central, Dundee, Cupar,
Kinghorn
- another artist's studio
- a cycle resource centre
- more model railway clubs
- Stonehaven posters
- more gardening – only 237 stations to go!

Adopters' lunch



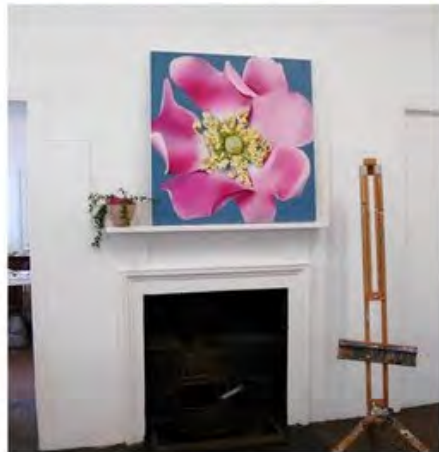
Community recognition



Uddingston basket trees



Ladybank



Laurencekirk





Girvan 150th anniversary



Johnstone sunflower







North Berwick winner for Best Station Environment at the 2010 Community Rail Awards





Dalgety Bay adopted by Inverkeithing & Dalgety Bay Rotary Club – 100th adopted station



Linlithgow Burgh Beautiful



HMS Waverley



Helensburgh Upper



Larbert Village School



Larbert Village School



Queens Park Railway Club



Spokes – Linlithgow cycle notice board



Stonehaven posters.



STONEHAVEN FOR REMINISCING

R W THOMSON VINTAGE RALLY



www.photography-by-robpowell.co.uk

Sponsored by ScotRail/Stonehaven Horizon Project

Help your station!





Thank you for listening!

Contact me at

john.yellowlees@firstgroup.com

Tel : 0141-335 4787